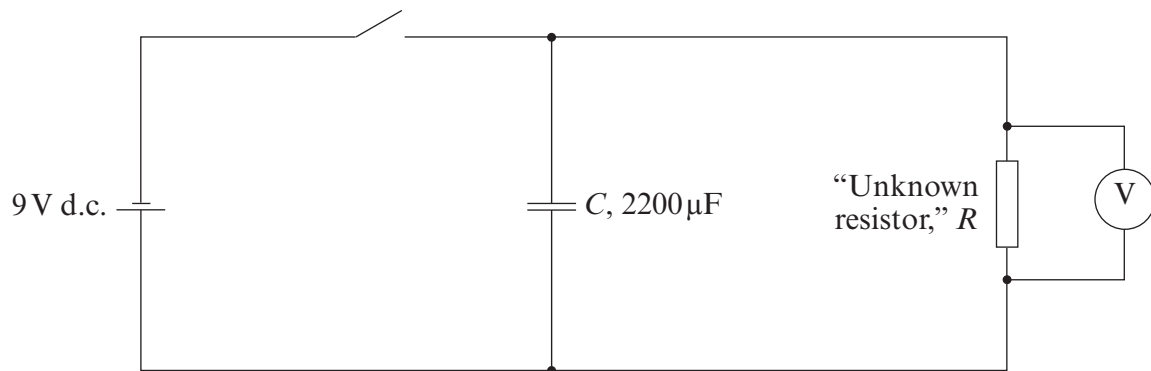


If candidates are provided with one press-to-make switch, the following information sheet may be used:

**INFORMATION SHEET 1(a):****Test 2**

The circuit should be set up as follows:



When the switch is pressed, the capacitor charges up. When the switch is released, the capacitor discharges through the resistor.

**In the event that a different variant of Information Sheet 1(a) is required, centres should produce their own with the same level of information and provide a copy with the moderation sample.**

**Information sheets 1(b) and 2 are as for Test 1.**